

about us | advertise | home |

Ariel light by Lolli & Memmoli

March 28th, 2012 by retail design blog



An invisible metal skeleton traces the line of a primordial geometric frame in space. From there, chains of crystals hang down delicately, reaching different heights – a feathery profile much different from the horizontal precision with which they begin their descent. Streaming light and dripping pendants with a Bohemian cut.

Designed by **Lolli & Memmoli**



GO

Retail Design Blog su Facebook
Mi piace 12.921

Retail Design Blog piace a 12,921 persone.

Karan Silvia Yuki

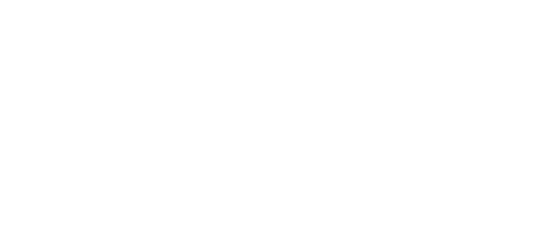
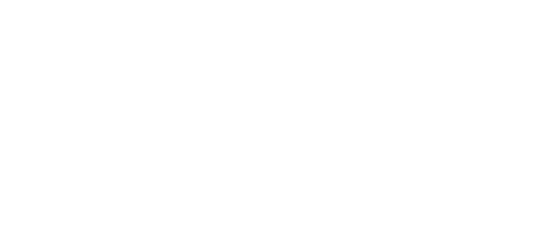
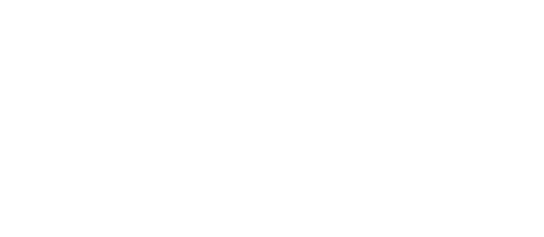
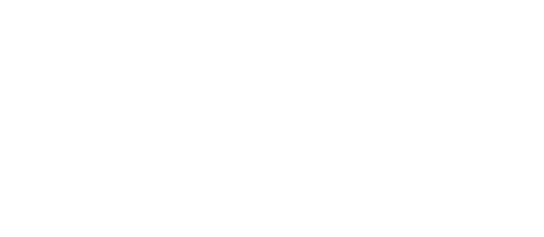
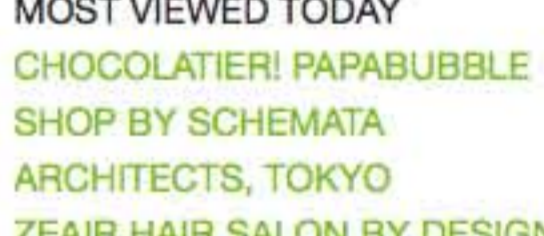
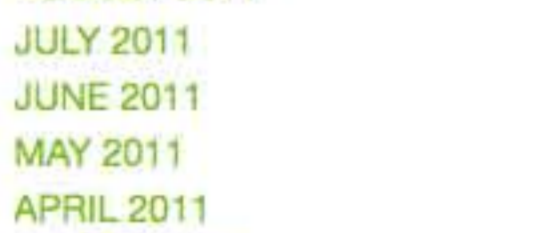
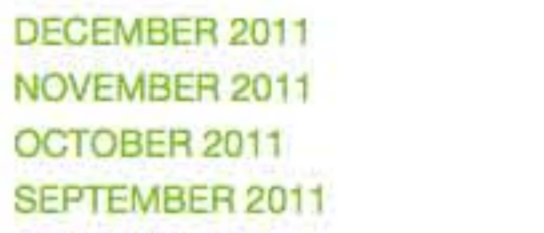
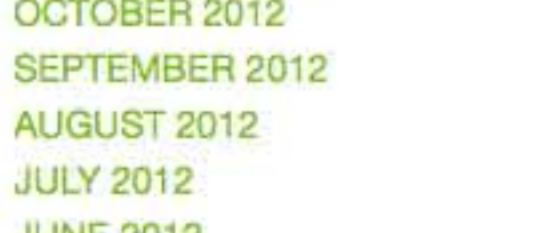
Plug-in sociale di Facebook

rss twitter in



- Manufacturing, construction
- 18 years of experience
- High Quality
- In more than 20 countries
- Low price
- CNC and LASER technology

www.articashop.com



NOVEMBER 2012
OCTOBER 2012
SEPTEMBER 2012
AUGUST 2012
JULY 2012
JUNE 2012
MAY 2012
APRIL 2012
MARCH 2012
FEBRUARY 2012
JANUARY 2012
DECEMBER 2011
NOVEMBER 2011
OCTOBER 2011
SEPTEMBER 2011
AUGUST 2011
JULY 2011
JUNE 2011
MAY 2011
APRIL 2011
MARCH 2011

2012 ATMOSPHERE BAR
BERLIN BRAND IDENTITY

BRANDING BREAD &
BUTTER BUDAPEST CAFE ECO

ELEMENTS EXHIBITION FASHION
FLAGSHIP FLAGSHIP

STORE FURNITURE HONG
KONG INSPIRATION INTERIOR

DESIGN LAMP LIGHTING
LONDON MATERIALS

MELBOURNE MILAN NEW YORK
OFFICE PACKAGING PARIS

POP-UP RESTAURANT
RETAIL SPACE SHAPE SHELVES

SHOES SHOP SHOPPING
EXPERIENCE SIMPLICITY

STORES SUMMER
TOKYO VISUAL

MERCHANDISING
WINDOW DISPLAY WINDOW

DISPLAYS WINDOWS

BLOGROLL
A LOVE OF VISUAL

MERCHANDISING
DISPLAY HUNTER

ESCAPARATINOVA
FAL BLOG

GRAPHIC STATEMENT
JY BY JASON YAO

LE JOURNAL DES VITRINES
MESVITRINESNYC

RETAIL MANNEQUIN DISPLAY
RETAIL STORE WINDOWS

THE WINDOW DISPLAY BLOG
THE WINDOW SHOPPER

VIMER
VITRINE RG

VITRINISTKA

NETWORKDBLOGS
Blog:

RETAIL DESIGN
BLOG

Topics:
STORE DESIGN,
MATERIALS, ECO

FOLLOW MY BLOG

MOST VIEWED TODAY
CHOCOLATIER! PAPABUBBLE

SHOP BY SCHEMATA
ARCHITECTS, TOKYO

ZEAIR HAIR SALON BY DESIGN
OFFICE DRESS, FUKUOKA –

JAPAN
BREADBOX CAFÉ BY ODA

ARCHITECTURE, NEW YORK
SALES OFFICE BY ONE PLUS

PARTNERSHIP, CHONGQING –
CHINA

CHOCOLATIER! PATRICK
ROGER CHOCOLATIER,
BRUSSELS

CHOCOLATIER! PATRICK
ROGER CHOCOLATIER,
BRUSSELS

HARVEY NICHOLS CHRISTMAS
WINDOWS 2012, LONDON

SHANG XIA STORE BY KENGO
KUMA, BEIJING

TOPSHOP & TOPMAN
WINDOWS AT OXFORD STREET,
LONDON

NOVOTEL RESTAURANT BY
BLACKSHEEP, MANCHESTER

COPYRIGHT INFO